

The ZHAW is one of the leading universities of applied sciences in Switzerland. It offers teaching, research, continuing education and other services that are both practice-oriented and science-based. ZHAW graduates are able to apply their knowledge responsibly in demanding professional fields. Research & development at the ZHAW focuses on key societal challenges, with a particular emphasis on energy and societal integration. The ZHAW's expertise in sustainable development and digital transformation enables it to impart forward-looking knowledge and play an active role in shaping the digital and ecological transformation. It also promotes entrepreneurial thinking and action.

With locations in Winterthur, Zurich and Wädenswil, the ZHAW is firmly anchored in its region whilst collaborating with international partners. It comprises eight Schools: Applied Linguistics, Applied Psychology, Architecture, Design and Civil Engineering, Engineering, Health Sciences, Life Sciences and Facility Management, Management and Law, and Social Work.

Study

The ZHAW gives students the chance to acquire the skills they need for successful careers on the national market and also in international and intercultural working environments. Using state-of-the-art teaching methods and cutting-edge technology, the ZHAW promotes a future-oriented teaching and learning culture. Thanks to the teaching staff's involvement in research activities, students constantly come into contact with new ideas; current examples from practice are incorporated into teaching, and practical projects allow students to gain an in-depth understanding of their subject. The ZHAW places a special focus not only on conveying practical and specialist competencies, but also on developing the social and personal skills essential for success in academic and professional life. Numerous degree programmes can also be studied part-time.

→ www.zhaw.ch/study

The Bachelor's and consecutive Master's degree programmes at the ZHAW:

School of Applied Linguistics

- Bachelor's programmes: Communication and Media Studies, Multilingual Communication, Language and Integration
- Master's programme: Applied Linguistics

School of Applied Psychology

- Bachelor's programme: Applied Psychology
- Master's programme: Applied Psychology

School of Architecture, Design and Civil Engineering

- Bachelor's programmes: Architecture, Civil Engineering
- Master's programmes: Architecture, Engineering

School of Engineering

- Bachelor's programmes: Aviation, Computer Science, Data Science, Electrical Engineering, Energy and Environmental Engineering, Engineering and Management, Mechanical Engineering, Medical Informatics, Mobility Science, Systems Engineering
- Master's programme: Engineering

School of Health Sciences

- Bachelor's programmes: Health Promotion and Prevention, Midwifery, Nursing/Nursing for Registered Nurses, Occupational Therapy, Physiotherapy
- Master's programmes: Midwifery, Nursing, Occupational Therapy, Physiotherapy

School of Life Sciences and Facility Management

- Bachelor's programmes: Applied Digital Life Sciences, Biomedical Laboratory Diagnostics, Biotechnology, Chemistry, Facility Management, Food Technology, Natural Resource Sciences
- Master's programmes: Environment and Natural Resources, Life Sciences, Preneurship for Regenerative Food Systems, Real Estate & Facility Management

School of Management and Law

- Bachelor's programmes: Applied Law, Business Administration, Business Information Technology, Business Law, International Management
- Master's programmes: Accounting and Controlling, Banking and Finance, Business Administration, Business Information Technology, Circular Economy Management, International Business, Management and Law

School of Social Work

- Bachelor's programme: Social Work
- Master's programme: Social Work

Continuing Education

The ZHAW is the perfect partner for lifelong learning, offering a wide range of continuing education courses and programmes in all the fields of its eight Schools. Indeed, lifelong learning and personality development are the guiding principles of continuing education at the ZHAW. Acquiring practice-oriented and research-based competences allows participants to develop their skills continually at any stage in their professional careers. The wide range of programmes offered at the ZHAW includes approximately 60 Master of Advanced Studies programmes (MAS/MBA), around 380 Diploma and Certificate programmes (DAS/CAS) and many continuing education courses. Continuing education programmes at the ZHAW generally have a modular structure: smaller units are combined to make up larger units. For example, an MAS programme comprises multiple CAS programmes plus a Master's thesis. This means that participants can plan their continuing education flexibly and follow tailor-made options to meet their personal needs and aspirations. For successfully completed modules, the ZHAW awards credits in accordance with the European Credit Transfer and Accumulation System (ECTS).

→ www.zhaw.ch/continuing-education

The continuing education courses and programmes include the following subject areas:

- Accounting/Controlling
- Architecture/Urban Development/Construction
- Banking/Finance/Insurance
- Coaching/Consulting/Supervision
- Communication/Language
- Computer Science/Data Science/Engineering
- Digital Transformation
- Education/Didactics/Culture
- Facility Management/Real Estate Management
- Food/Environment/Life Sciences
- Health/Nursing
- Health Care Management
- Law
- Leadership/Human Resource Management
- Management/Business/Administration
- Marketing/Communication/Media
- Psychology/Psychotherapy
- Social Work

Research and Development/Consultancy and Services

As one of Switzerland's largest multidisciplinary universities of applied sciences, the ZHAW brings together under one roof many different disciplines and a wide range of specialist knowledge. ZHAW researchers develop groundbreaking innovations that can be successfully implemented in practice. Together with industry partners, they carry out several hundred projects each year, with a total funding of about 167 million Swiss francs. The ZHAW offers different forms of collaboration to serve different needs: student projects and theses, research contracts and services, and long-term research and development projects. The ZHAW is one of the most active universities of applied sciences, in both a national and international comparison, as regards participation in EU research projects.

The research profile of the ZHAW is characterised by two strategic focal points: energy and societal integration. The ZHAW is reacting to the huge challenge of the energy turnaround by bundling competences in energy research areas. This demands the interaction of various disciplines, since long-term security of supply involves not only technical and economic, but also socio-cultural and legal challenges. Through its research in societal integration, the ZHAW seeks to contribute to the strengthening of integration on the social, economic, cultural and political levels. In both of these key areas, the focus is on interdisciplinary research and social, organisational and technological innovation.

→ www.zhaw.ch/research

International

The ZHAW enables students to strengthen their international profile and hone their capacity for intercultural communication and collaboration. Language skills and intercultural education are important prerequisites for operating in a globalised society, economy and scientific community. For this reason, the ZHAW has three levels of international orientation and connectedness: the German-speaking regions, Europe and the globe. This is reflected, for instance, in internationally-oriented degree programmes as well as joint and double degree programmes. More and more students spend some time studying or doing an internship abroad, both in European countries and on other continents. The ZHAW currently has 502

partnership agreements with universities in 64 countries. The ZHAW also supports its employees when it comes to spending time abroad, helping and challenging them to network with peers from all over the world. It is strongly involved in European programmes and active within international networks of industry and university partners doing research on current issues. In 2023, the ZHAW has become a member of the European Engineering Learning Innovation and Science Alliance (EELISA).

→ www.zhaw.ch/en/international

Digital, sustainable and entrepreneurial

The ZHAW addresses the digital transformation through its "ZHAW digital" strategic initiative. The goal is to bundle expertise in the areas of studying, continuing education and research in order to play an active part in shaping the digital transformation: the ZHAW produces digitally skilled graduates, conducts research on potential solutions to challenges posed by the digital transformation and helps to shape the discourse. With its sustainability strategy "ZHAW sustainable" the ZHAW takes societal responsibility and contributes to overcoming ecological, economic and social challenges. Students are provided with the tools to promote the preservation of our natural resources. The ZHAW's research activities generate

knowledge and utilise synergies, establishing the university as a living lab for sustainable development. Our constantly changing world is also increasingly necessitating entrepreneurial skills and ways of thinking. With its "ZHAW entrepreneurship" strategic initiative, the ZHAW strives to be a meeting place for people who think and act in an entrepreneurial manner so as to allow them to expand their horizons, experiment and develop.



5,058 ←
first-year students

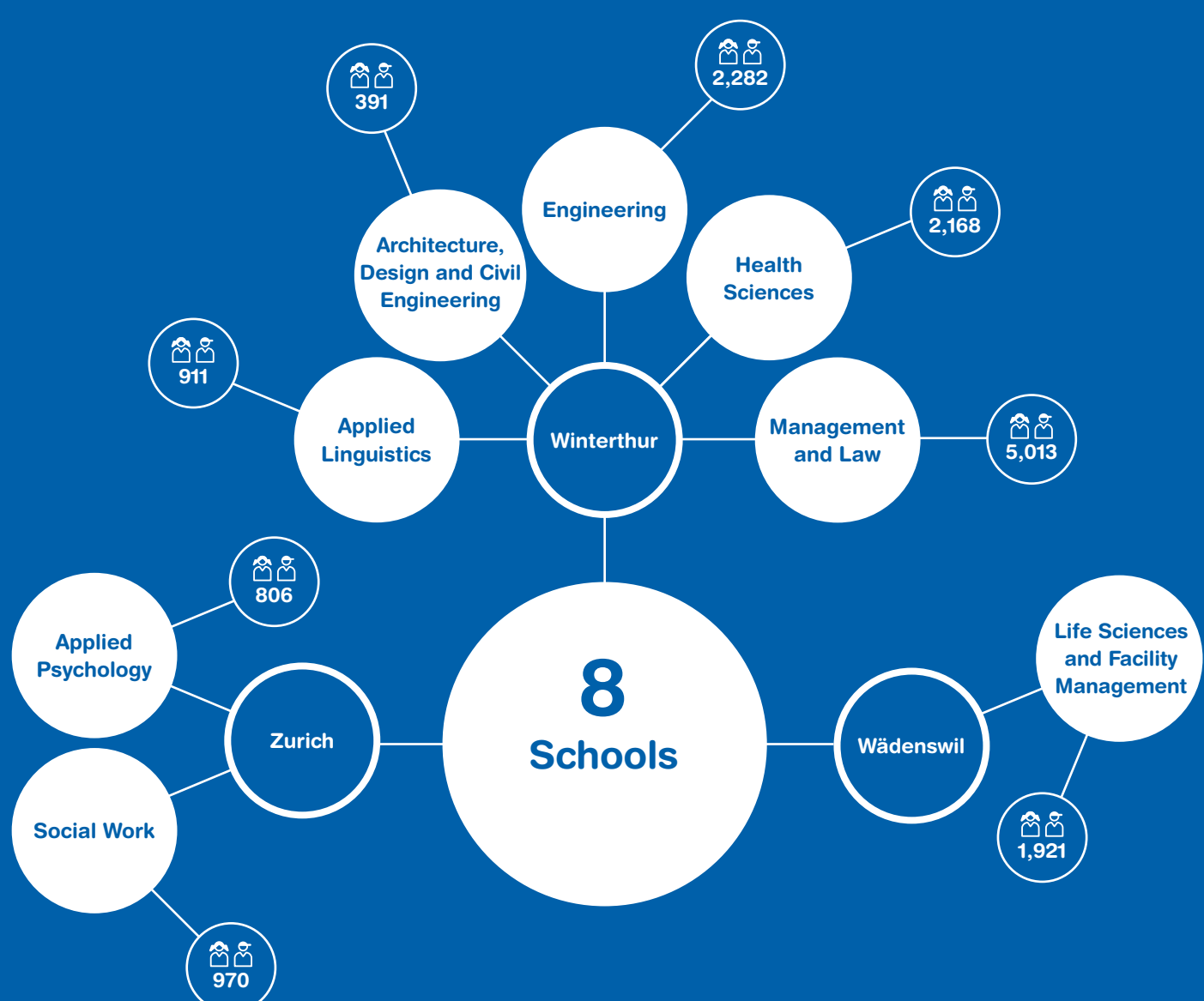
14,462
students

→ 7,752
proportion of women (53.6%)

3,529
graduates

11,803
undergraduate students

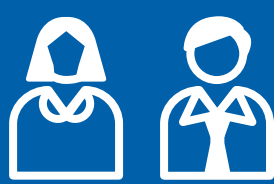
2,659
postgraduate students



1,379
research associates and assistants

960
lecturers

282
professors



3,704
employees

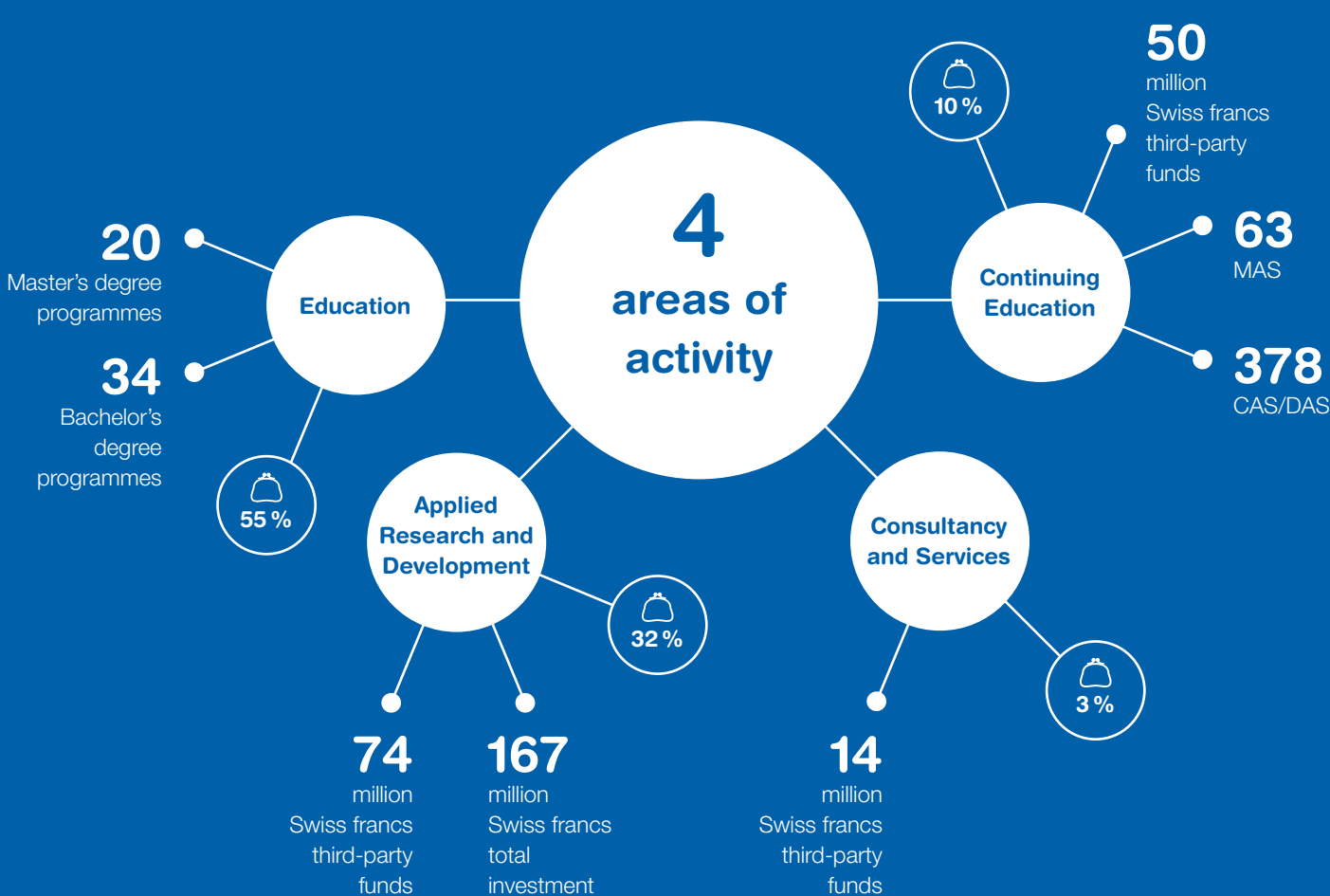
1,065 ←
administrative and technical staff



international

502
partner universities

64
countries



576
million Swiss francs
total investment

→ 75.7
per cent
personnel

16.8
per cent material
and other costs

7.5
per cent
property costs

Zurich University of Applied Sciences

President's Office

Gertrudstrasse 15
P.O. Box
CH-8401 Winterthur
Switzerland

Phone +41 58 934 71 71
info@zhaw.ch
www.zhaw.ch

Follow us:

